

UArctic ICARP IV

community

engagement



CANADA ARCTIC
CANADA ARCTIQUE

Supported by Global Affairs Canada
through by the Global Arctic Leadership Initiative



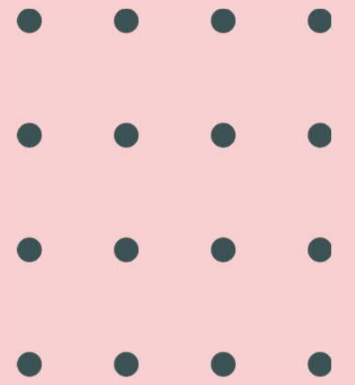
Anastasia Emelyanova & Kirsi Latola, Thule Institute, University of Oulu

Process:

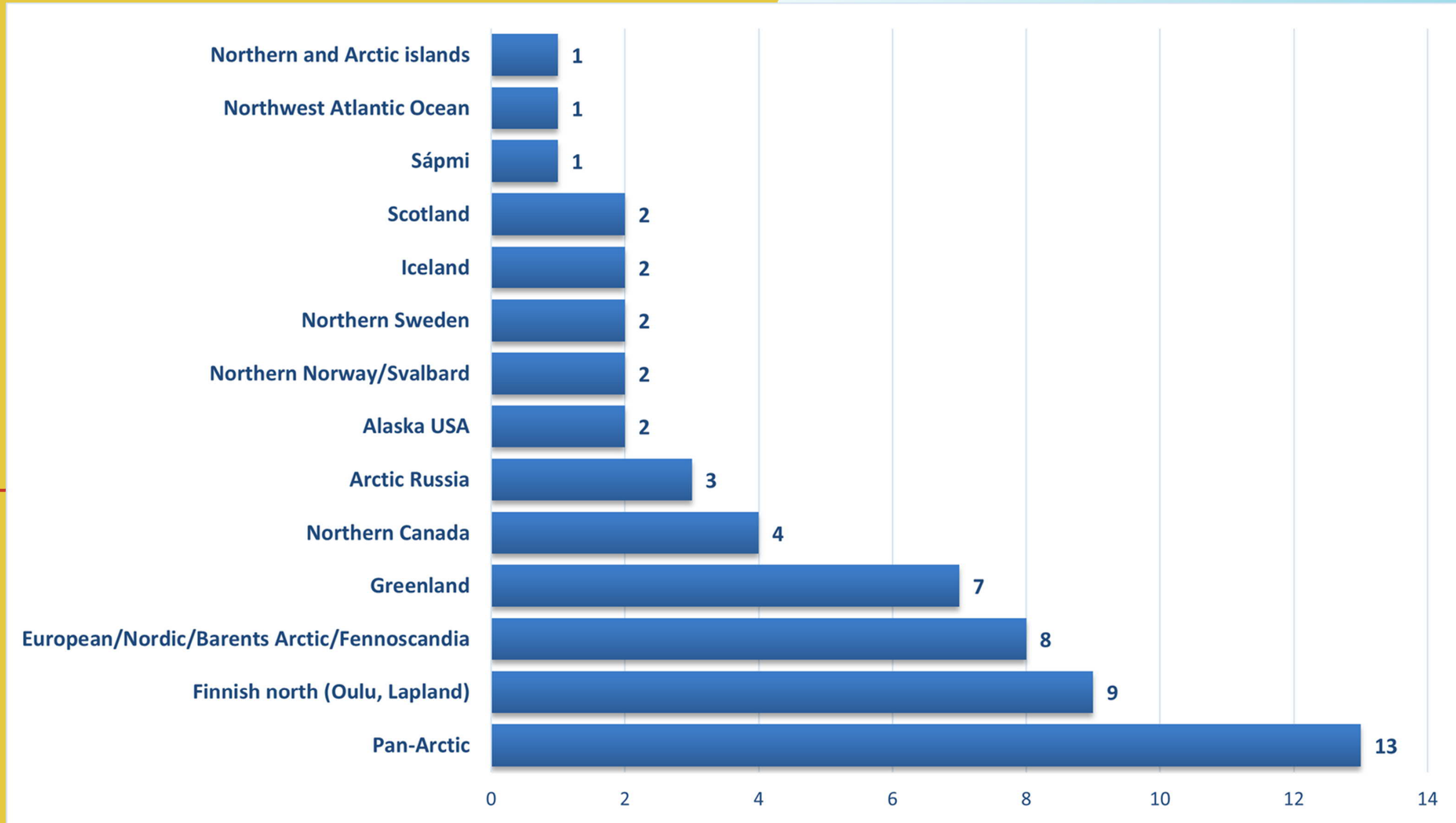
- UArctic ICARP IV Task Force established (2022)
 - Open online survey, March-April 2023
 - UArctic Thematic Networks leadership team meeting in April 2023
 - A pre-meeting and networking session organised during the UArctic Assembly in Quebec, Canada in May 2023
 - Draft report to be reviewed by Thematic Networks, UArctic Chairs, Mimir and Avatitsinni, UArctic ICARP IV Task Force and Ma-Mawi UArctic Senior Leadership
 - Report to ICARP IV in fall 2023
-

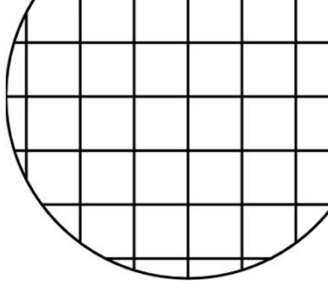
Open online survey

- A starting point for collecting UArctic input
 - Personal opinions on the most pressing issues and challenges facing "region of interest" in the Arctic now and in 10 years
 - Data collected March 1 - April 11, 2023
 - 46 responses from 13 countries (80% Arctic countries)
-

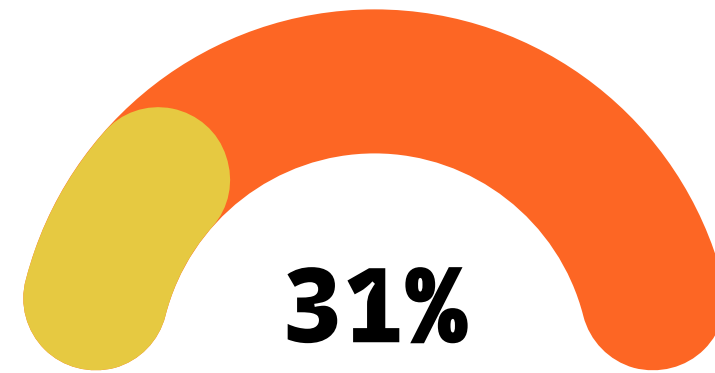


Regions of interest





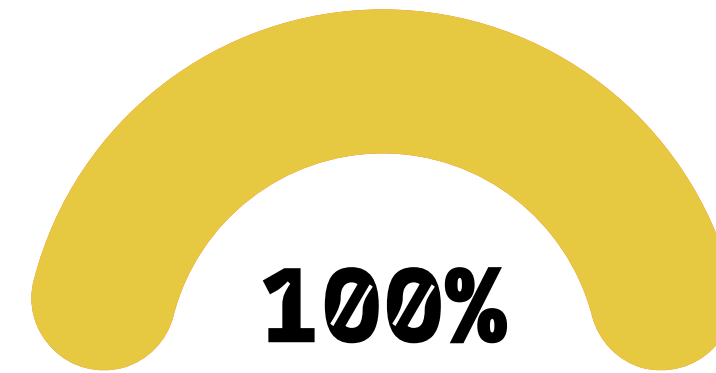
The leading challenges by the "region of interest" (survey)



31%

Pan-Arctic (13)

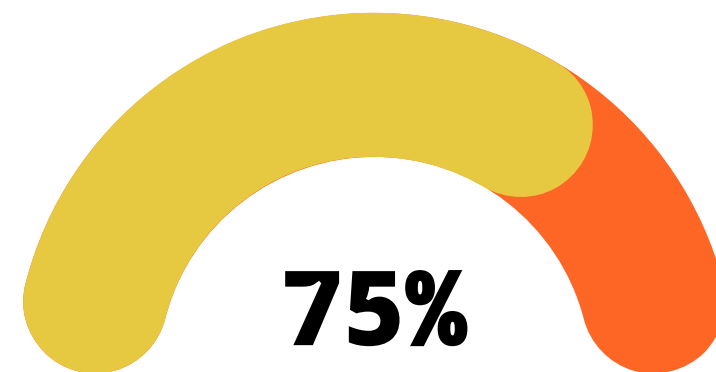
31% **climate change** esp shrinking of the ice and warming of the Arctic.
15% each geopolitics, cultural, educational and environmental problems



100%

Non-Arctic (2)

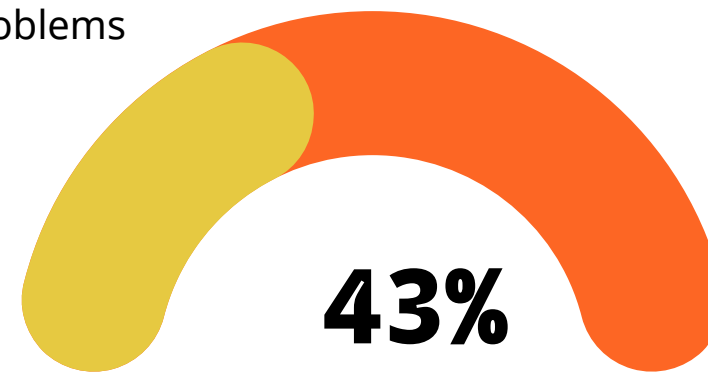
100% environmental issues reported as main challenge for the Arctic - incl. Lack of human interactions with the natural environment



75%

**North American Arctic -
Canada/US (6)**

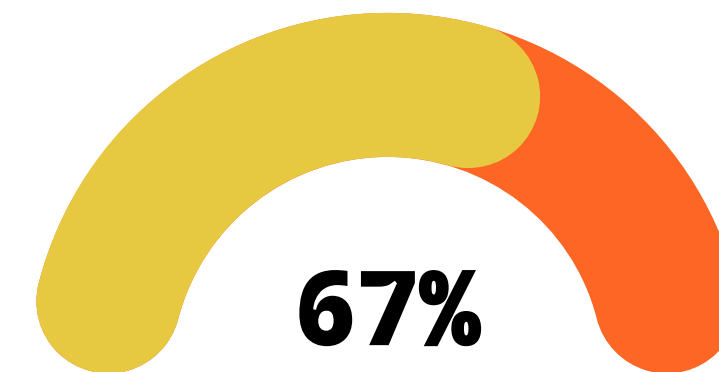
75% **climate change** and its effects to all aspects of life and reduction in protective factors.
Also, the issues of cultural loss and mental health among Indigenous communities



43%

Nordic Arctic (28)

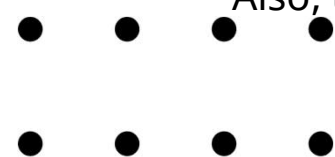
43% **climate change**
36% socioeconomic/health problems incl. occupational health and loss of purchasing power/quality of life. Population outflow, transition to green energy, issues of Indigenous identity and cultural heritage, effects of war and Arctic security are among other challenges



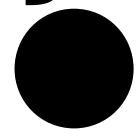
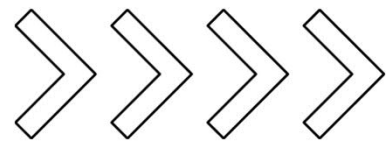
67%

Russian Arctic (4)

67% worries come about continuing Arctic scientific cooperation with the Russian scholars and geopolitical tensions.
Other concerns are about drilling and mineral resources extracting without deep scientific research



Survey: Clusters of reported challenges



Environmental incl. energy

Ecological degradation and pollution, loss of species, habitat, commercial fishing, lack of natural resources, mineral resources extraction without deep scientific knowledge, lack of human interactions with the natural environment.

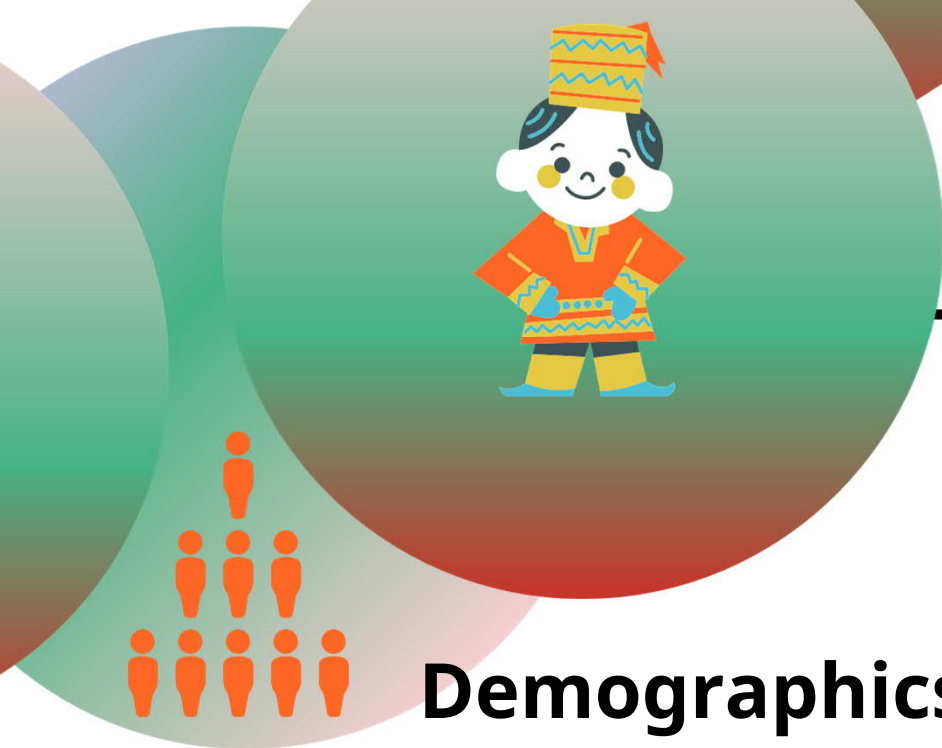
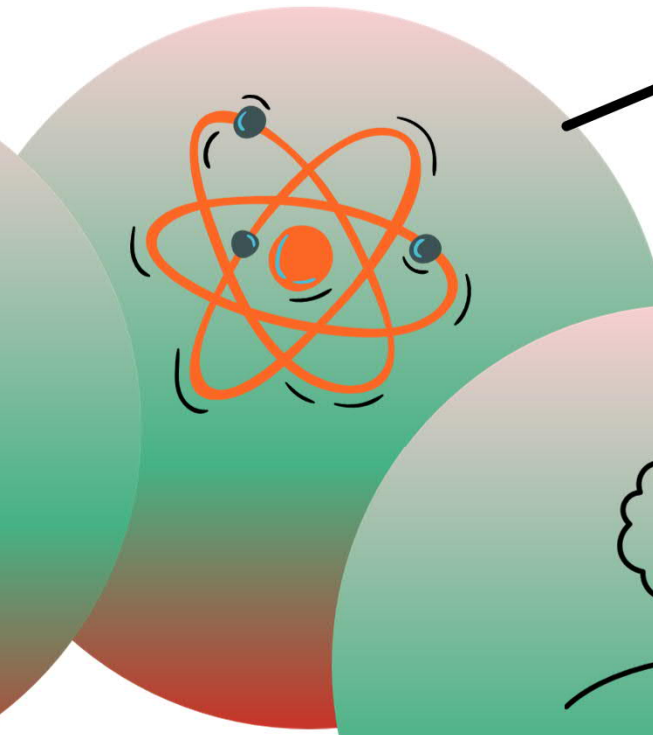
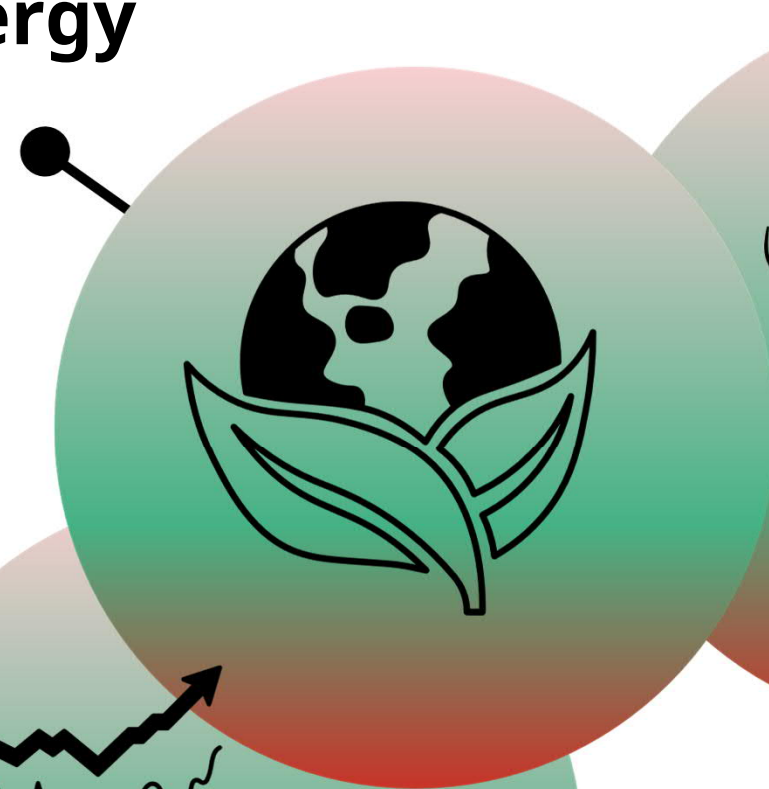
Transitions to renewable energy and effect of peoples life, energy development in the indigenous peoples lands

Socioeconomic

Decrease in quality of life (losing purchasing power, inflation, deterioration of health care, education, increase in crime rates, poverty etc), occupational safety, shipping, micro-entrepreneurship and Arctic business development, independent new traditional economy combining modernity with the traditional aborigine economy

Geopolitical

International peace and security, global political situation and spill-over effect in the Arctic, wars, emergence of many actors and their negligence of Arctic needs, Human Security as an alternative to the traditional security concept articulated by center economies



Scientific cooperation

Inclusive open science, cooperation with Russian scholars, data collections problems, lack of rapid data processing and forecasting/modelling

Climate change

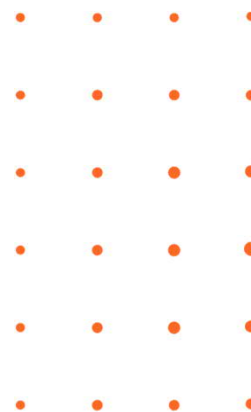
Extreme weather events and disaster response, permafrost thaw, loss of sea ice, warming Arctic and cons of all of that

Cultural

Cultural assimilation, loss of heritage, anti-colonial action, indigenous self-government, sustainable relations between people in the Arctic

Demographics, health, education

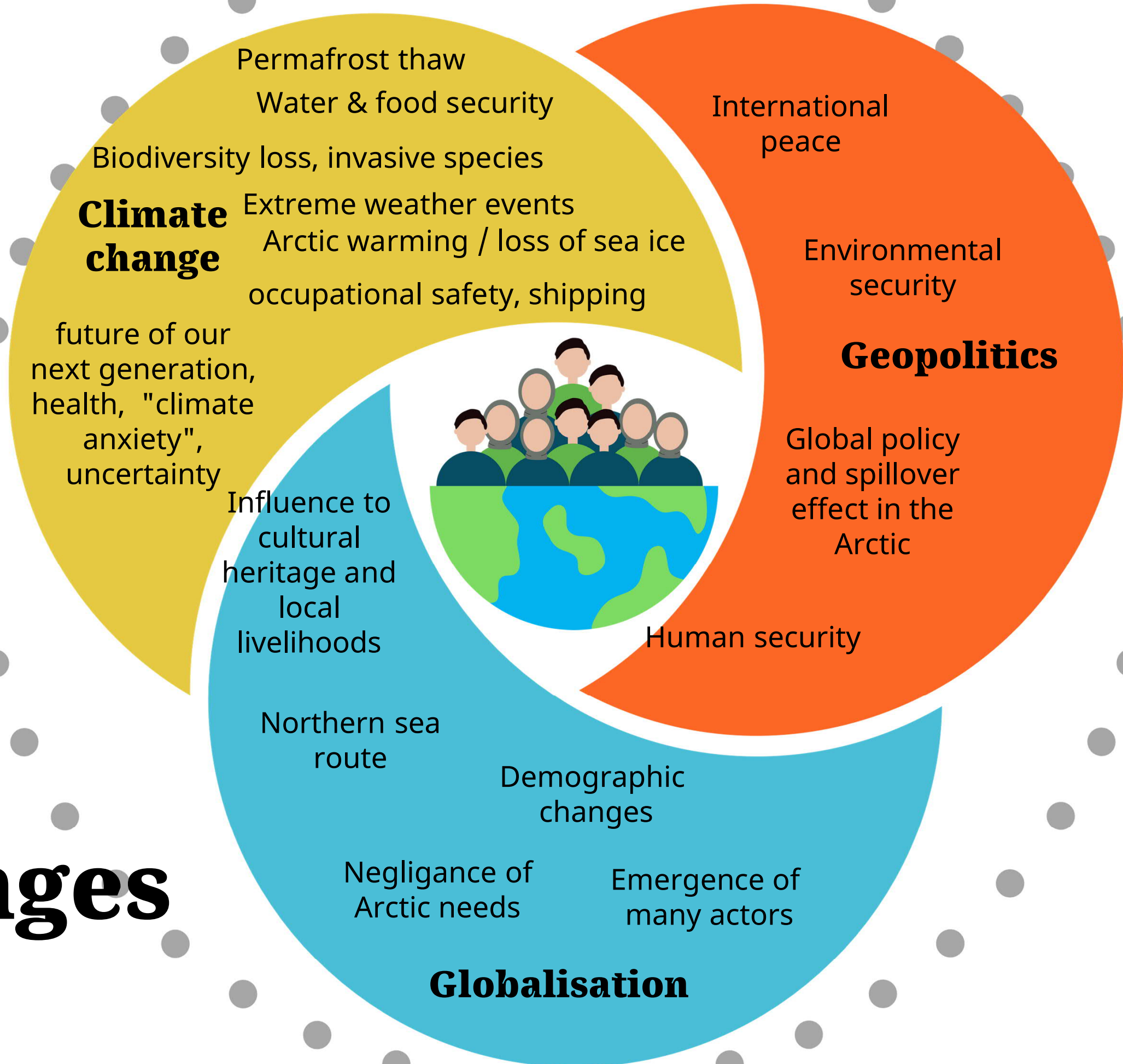
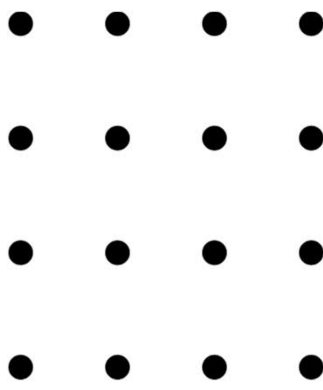
Continued depopulation (ageing, out-migration), future life of youth in the Arctic. Mental health, health care in rural and remote communities. Ownership of education and how education serves the Arctic.



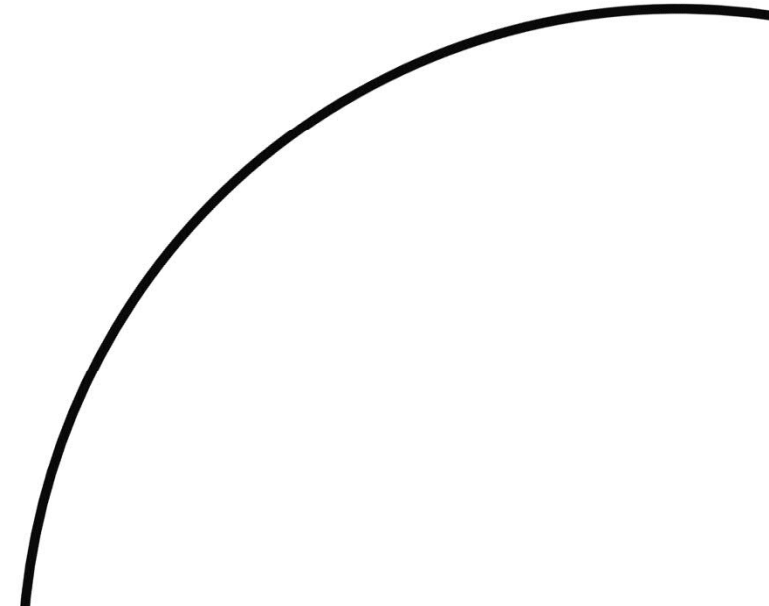
Thematic Networks and UArctic Institute Leadership team meeting

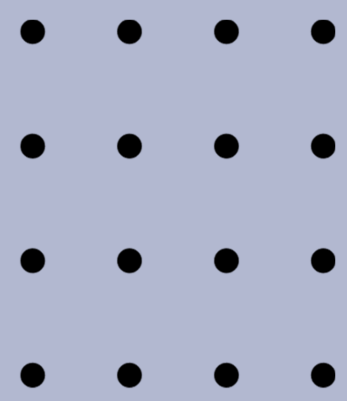


- Annual face-to-face meeting, Rovaniemi, 25-27 April, 2023
- Presentation of online survey followed by group work and discussion on research priorities under each cluster identified in survey
 - Challenges
 - Capacity building, education
 - Mitigation, adaptation
 - Research practices, code of conduct

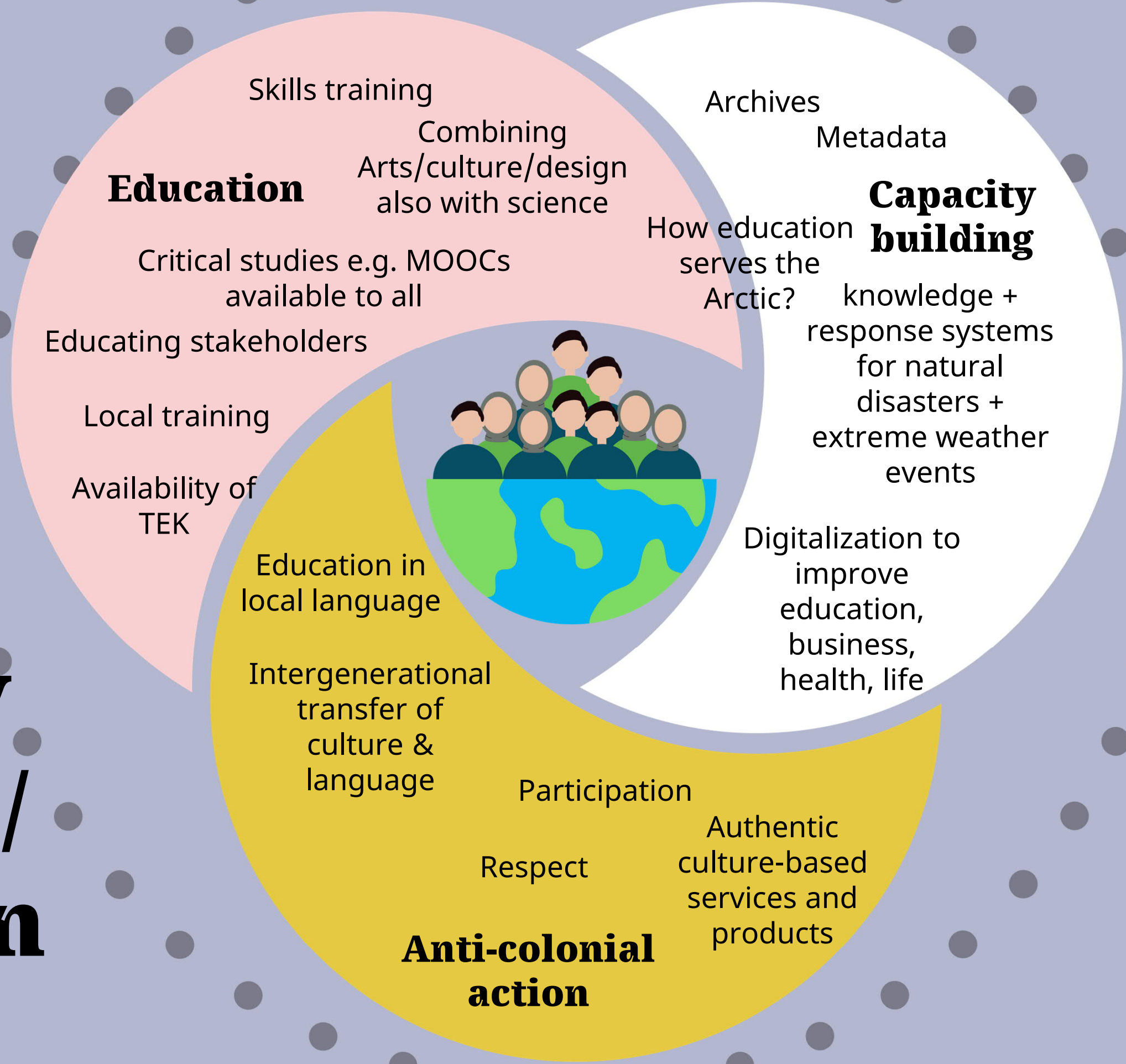


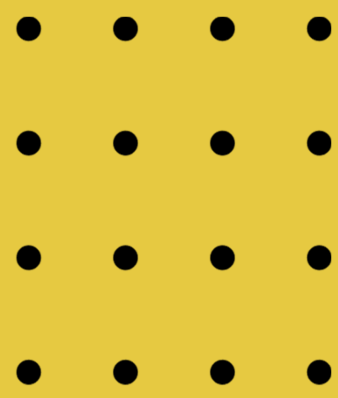
Challenges



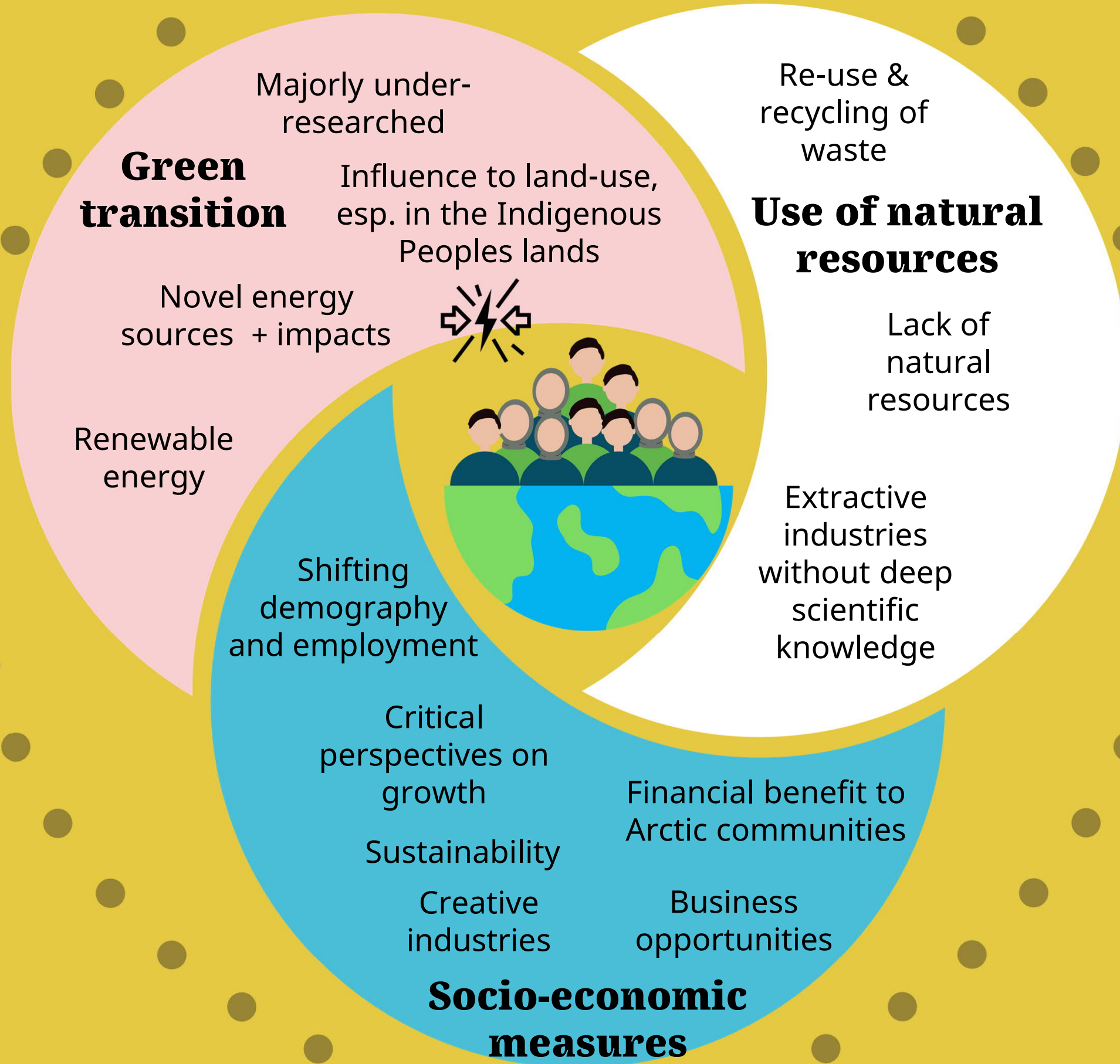


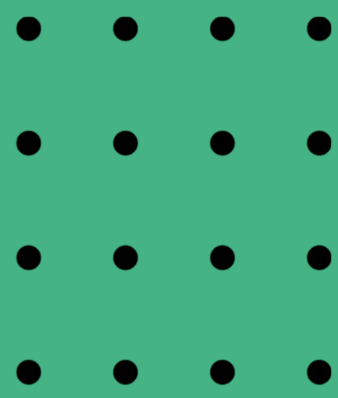
Capacity building / Education



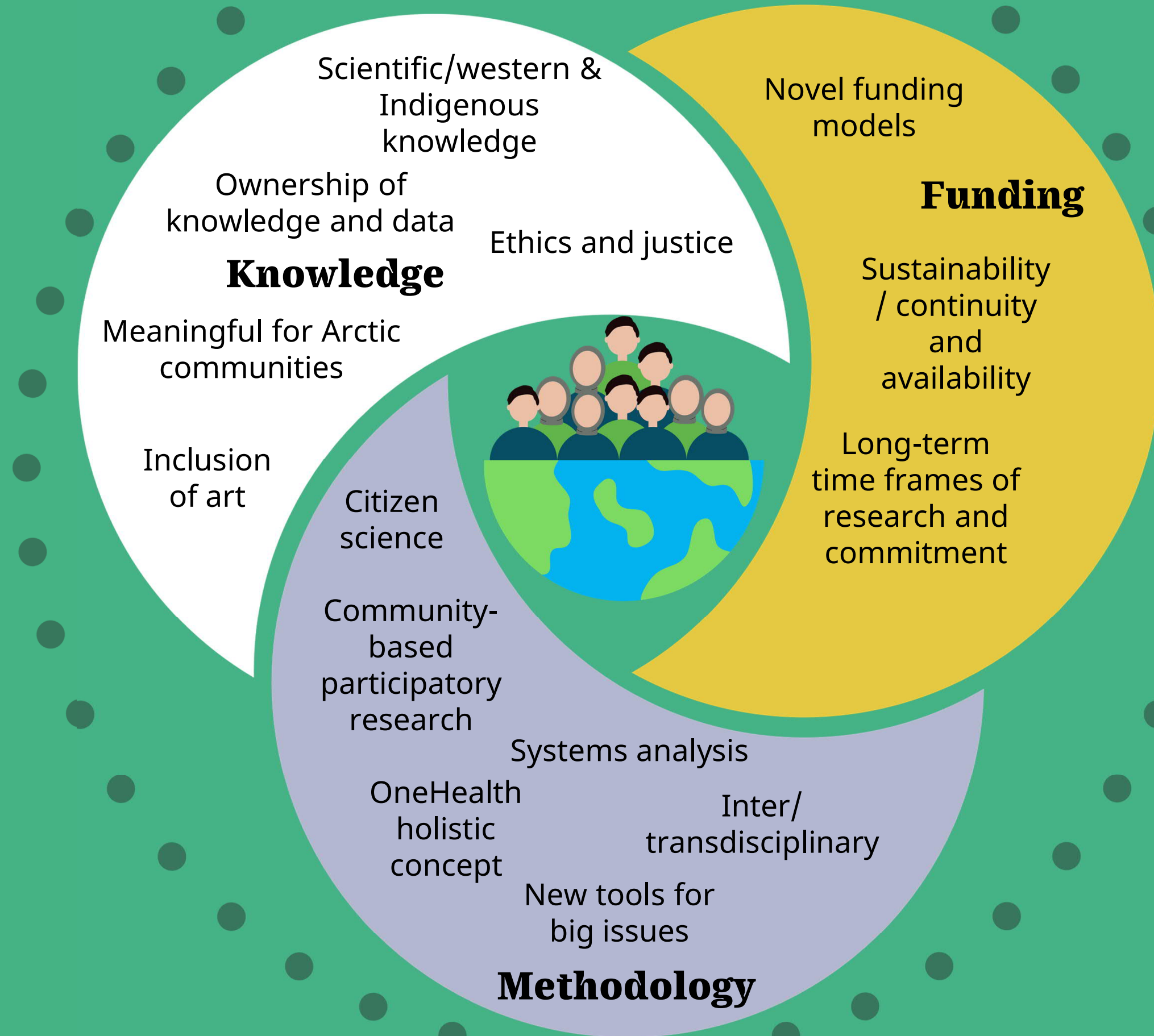


Mitigation and adaptation

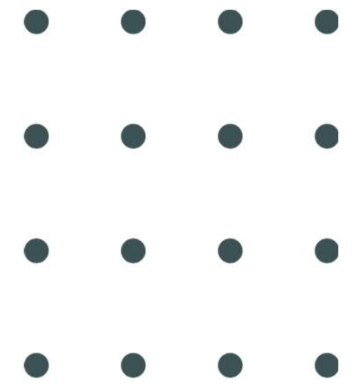




Research practices, code of conduct



Group work:



Three topics to be discussed in groups:

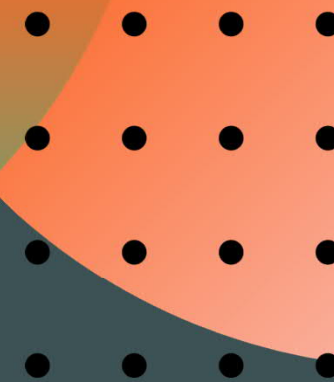
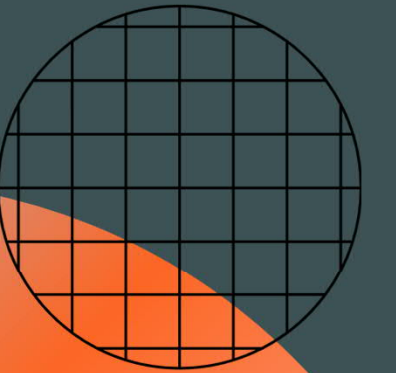
- Relevant education to the Arctic, how education can serve Arctic, and how to Indigenize and decolonize education?
- Code of conduct in research
- Research needs, large-scale initiatives?

➤ ICARP Follow-up from pre-meeting and discussion on research priorities, Thursday, May 25th (13-14.00)

Thank you!

CANADA ARCTIC
CANADA ARCTIQUE

Supported by Global Affairs Canada
through by the Global Arctic Leadership Initiative



kirsi.latola@uarctic.org